



NuEra Tight

Speaks your body language

Welcome to A New Era of Personalised Body Treatments

No two patients are exactly alike

This is why a one-size-fits-all treatment plan is no longer suitable.

Now, you can leave all limitations behind

Body Sculpting takes on a whole new meaning with a game changing solution for Fat Reduction, Skin Tightening, Cellulite and Wrinkle Reduction, all-in-one device.

Discover an unparalleled level of personalisation

NuEra® Tight powered by FocalRF™ technology, using multiple RF frequencies to dial-in the depth of energy penetration, accounting for multiple clinical indications, skin conditions and body areas, in the same session.

For a treatment as unique as your patients



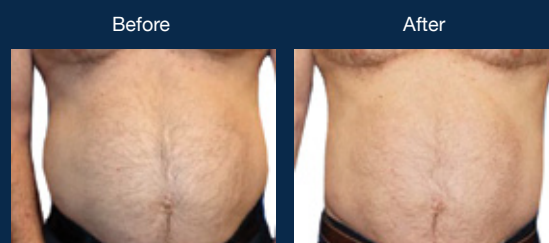
Body Sculpting

Takes on a New Meaning

Radiofrequency (RF) has become increasingly popular in recent years as patients desire to sculpt problem areas comfortably and without downtime. NuEra Tight with FocalRF technology uses 5 different frequencies to dial-in the depth of energy penetration heating specific skin and tissue layers achieving Fat Reduction, Skin Tightening, Cellulite and Wrinkle Reduction.

Fat Reduction

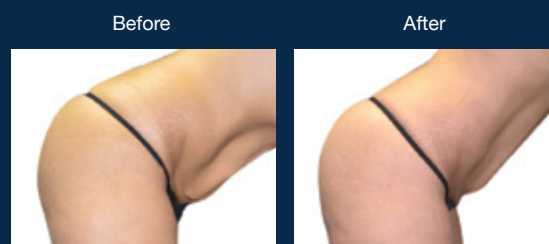
A truly personalised body contouring experience starts with FocalRF technology treating subcutaneous fat on any region of the body easily and effectively. Choose a superficial treatment at 2MHz to remove stubborn fat cells or select 470kHz for deeper heating.



Courtesy of Jeffrey Caruth, M.D.

Skin Tightening

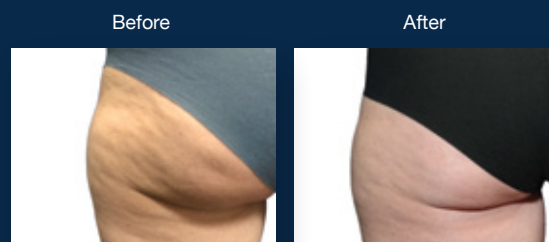
NuEra Tight automatically elevates and regulates the temperature in the skin tissue to the required degree stimulating collagen, improving signs of sagging skin and wrinkles. From larger areas of the body to a smaller facial area, FocalRF technology targets the energy penetration to the dermis layer, ensuring safe and effective treatments.



Courtesy of Luigi Rizzi, M.D.

Cellulite Reduction

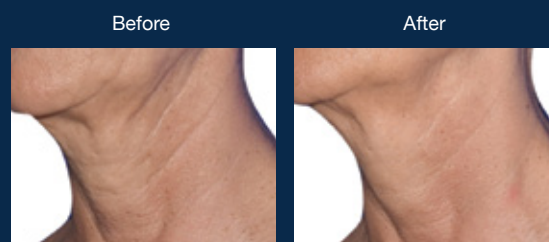
Powered by FocalRF technology NuEra Tight applies multiple frequencies, two treatment modes and effective mechanical massage for connective tissue manipulation, to remodel cellulite and improve the appearance of bumps and dimpling.



Courtesy of Clark Schierle, M.D., Ph.D., FACS

Wrinkle Reduction

With high frequencies and precise temperature control, NuEra Tight is able to stimulate the activity of fibroblasts and enhance blood flow, creating an immediate smoothing effect that will continue to improve as the body's healing mechanism generates new collagen production.



Courtesy of Gerhard Sattler M.D.

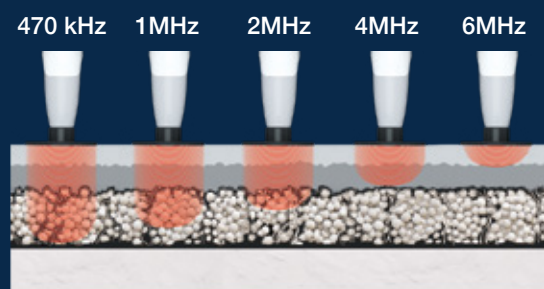
FocalRF Technology

Controlled Treatment Depth

Experience a new level of control with FocalRF technology

Utilise multiple RF frequencies to dial-in the depth of energy penetration accounting for different indications, tissue thickness variations between body areas and patients.

Choose your frequency



Controlling Depth

Treating different skin conditions

Controlling Results

Better control over clinical end goals

Controlling Safety

Targeting the optimal tissue depth



Advanced Tools for Today's Aesthetic Patient

Lumenis developed NuEra Tight with state-of-the-art features in an easy-to-use device with an intuitive graphical user interface. Selecting proper treatment parameters is only a touch away.



NuLogic

Advanced Protocol for Expert Users

Unique treatment protocol

Multiple treatment protocols for different indications and skin layers applied automatically in one treatment session.

A new level of customisation

Set multiple values for frequency, temperature, time and electrode size.



NuAPIC

Automatic Personalised Temperature Control

Ensuring therapeutic temperature throughout the procedure. Adapting the power to meet the patient's unique features.

Automatic Accessory Recognition

Multi-size electrodes

Eight Coated Capacitive Energy Transfer (CCET) electrodes to perfectly match any patient from head to toe, for improved comfort & uniform energy distribution.

Handpieces

Three ergonomic light-weight handpieces: Body, Face and Bipolar.



Increase Your Bottom Line with NuEra Tight

The demand is clear. Patients want quick and comfortable treatments and long-lasting results that look natural. With NuEra Tight you can meet this demand while exceeding expectations. Whether providing a standalone solution for fat reduction, skin tightening, cellulite and wrinkle reduction or combining with other modalities, NuEra Tight helps you create advantages for your practice. Best of all, NuEra Tight requires no expensive consumables so there's nothing holding you back from reaching your ROI.



Hear From Our Customers

"Radio Frequency treatments are among the most requested aesthetic therapies today. NuEra Tight with ForcalRF technology is highly customisable with a wide selection of frequencies and handpieces that deliver fast, comfortable, and non-invasive treatments. This results in my patients' achieving their desired improved appearance while ensuring safety and efficacy thanks to the NuAPIC temperature-control feature. This device is painless yet effective in body contouring a game-changer for my patients."

Macrene Alexiades-Armenakas, M.D., Ph.D., FAAD, Clinical Dermatologist, Laser Surgeon and Researcher Dermatologist, New York.



Your journey with Lumenis has just begun

At Lumenis, we want to do what we can to assist you and the future of your business. That's why we have developed a Customer support system that begins with the first conversation and will stay with you as your business grows.



Superior Clinical Training and Education

Lumenis offers extensive in-clinic hands-on education and training at the time of installation and provides ongoing clinical support via in-clinic visits and through our new continued education programs.



Extensive Service Network

We are committed to providing high quality, comprehensive service for medical equipment repair and maintenance. Lumenis service provides you with peace of mind, so you can focus on patient care, rather than equipment maintenance.



The HUB

The HUB offers a virtual gateway to access expert on-demand education, allowing you to engage with leading Aesthetic experts across the globe. An industry first, The HUB is designed to help you expand your knowledge and solidify your place in the industry through access to virtual training, workshops, demonstrations and expert insight.



Lumenis Partnerzone

Exclusive access to our Partnerzone physician portal: an online marketing and resource center to access dedicated technology materials such as patient brochures and posters, clinical protocols and parameters, as well as other materials to help grow your business and product knowledge.



Account Management

Our dedicated account managers maintain customer relationships and act as the key point of contact to ensure you get the most out of your Lumenis technology.

About Lumenis

Lumenis is a global leader in the field of minimally invasive clinical solutions for the aesthetic, surgical and vision markets, and is a world-renowned expert in developing and distributing energy-based technologies, including laser, intense pulsed light (IPL) and radio frequency (RF). For over 50 years, Lumenis' ground-breaking products have redefined medical treatments and have set numerous technological and clinical gold standards.

Specifications

FocalRF Emission Frequency ($\pm 1\%$)	470 kHz, 1 MHz, 2 MHz, 4 MHz, 6 MHz
Output Energy ($\pm 10\%$)	250 W
Display LCD Touch Screen	15"
Coupling System	Capacitive
Operative Mode	Automatic treatment presets, NuLogic & Manual
Temperature Control	NuAPIC
Temperature Range	From 35°C to 45°C $\pm 1^\circ\text{C}$
Timer	Up to 90 min
Mains	100-240 Vac; 50/60 Hz; 350 W
Dimensions	127x55x60 cm (HxWxD)
Weight	Weight 40 Kg
Safety Class	Class I - type BF
Handpieces	Face and Body, Bipolar
Return Electrodes	Disposable return pad
Capacitive Coated Electrodes	$\varnothing 20$ mm, $\varnothing 30$ mm, $\varnothing 40$ mm, $\varnothing 60$ mm, $\varnothing 70$ mm, $\varnothing 80$ mm, $\varnothing 100$ mm, $\varnothing 40$ mm with massage

NuEra Tight 1CH is intended for:

- Treatment of edematous-fibrous-sclerous dermopanniculosis
- Treatment of skin atrophy and elastosis
- Treatment of microcirculation and venous insufficiency
- Treatment of hyperplasia and hypertrophy of adipocytes

Warnings and Risks: NuEra Tight is unsuitable for anyone who is pregnant, has an infection or illness, or is heat-sensitive. Cuts, wounds, piercings and tattoos must be avoided and areas with injectable fillers and toxins left for a month before treatment. Patients with a metal implant or implanted device (e.g pacemaker) must consult with a qualified physician first. If deemed suitable, the return pad must be placed far away from the implant. Local, oral or systemic anesthetics cannot be used before or during treatment as patients need to provide regular feedback to ensure their continued comfort. Insulate patients from metal objects, especially any in direct contact (e.g. the bed). A full practitioner consultation is always advisable; for contraindications and risks in full, see the NuEra Tight user manual.

 **Bios S.r.l**
Via Guido Rossa
10/12 - 20090
Vimodrone (MI) - Italy
T +39 02 27304275
F +39 02 27304276
info@biosgroup.eu
www.biosgroup.eu

AMERICAS
San Jose, CA, USA
T +1 408 764 3000
+1 877 586 3647
F +1 408 764 3999

AUSTRALIA
Chatswood, NSW,
Australia
AUS 1800 586 364
NZ 0800 239 015

ASIA PACIFIC
Beijing, China
T + 86 10 5737 6677
F +86 10 5737 6767
Gurgaon, India
T + 91 124 422 07 95
Kowloon, Hong Kong
T + 852 217 428 00
F + 852 272 251 51

EMEA
Dreieich Dreieichenhain,
Germany
T +49 6103 8335 0
F +49 6103 8335 300
Roma, Italy
T +39 06 90 75 230
F +39 06 90 75 269

Hertfordshire, UK
T +44 20 8736 4110
F +44 20 8736 4119

© LUMENIS LTD 2020

 Rx ONLY

 **Lumenis®**
Energy to Healthcare



LUMENIS.COM.AU/NUERA-TIGHT

PB-00018880 Rev A